

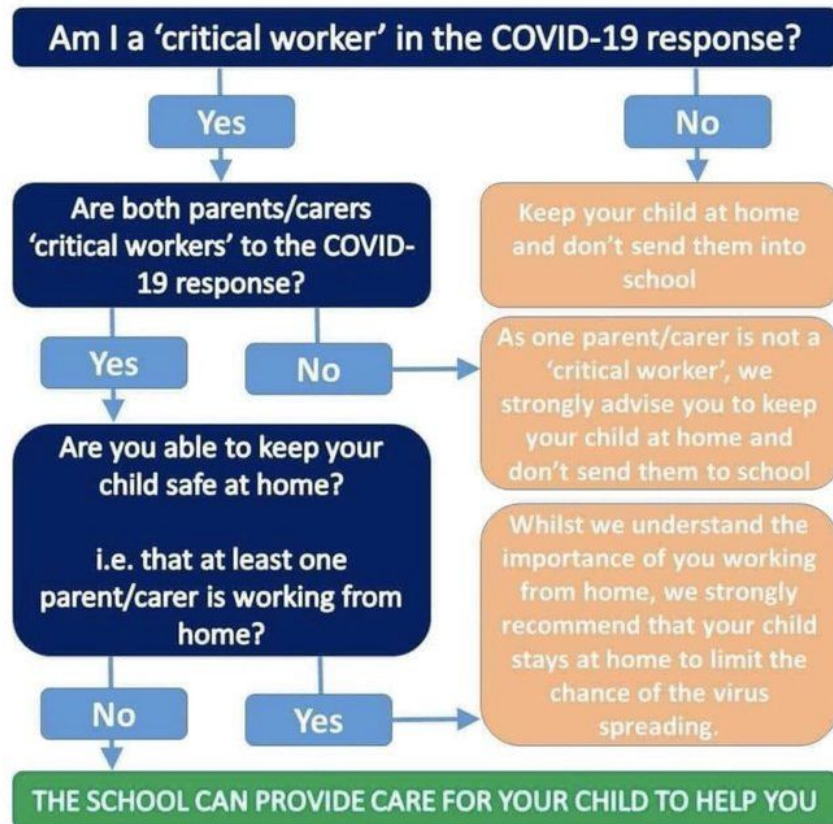
Dear Parent/Carer,

**COVID-19 Update**

We are about to come to the end of week two of term 5 which feels very surreal in the current circumstances. Over the last week you will be aware that there have been no significant changes in Government Policy but there has been a focus on the use Personal Protective Equipment (PPE). We have been fortunate enough to work with the LA to establish a pathway for acquiring PPE for use in school and this has now started, along with daily temperature checks to ensure students and staff are not at risk. Staff (and students) are able to access masks, gloves, aprons and hand sanitiser.

We will again be meeting next week to review the number of students in school and we would expect a slow increase over the coming weeks until the Governments guidance changes. Students currently in school are for critical key workers who have to be in work, or for students at a point of crisis at home (vulnerable). The system is not in place to provide families with the opportunity to do additional work, work from home, or accept additional shifts etc.

I must again re-emphasise the stay at home message and the diagram below for guidance on this.



Our student numbers are in line with other PSCN schools across Kent and also higher than the national average with many PSCN schools currently closed. The school Leadership team and class teachers will continue to be in contact with you but please do not take offense if the decision is taken not to provide a place in school as this will not be done without consultation and discussions.

Although I would like us to return to normality and a school full of students and staff again, the safety of the whole school community is paramount.

Stay safe, stay home.

Yours sincerely,

A handwritten signature in dark ink, appearing to read 'Scott Jarred', written in a cursive style.

Scott Jarred – Headteacher